



LEVERAGED FINANCE MONTHLY

AUGUST 2021

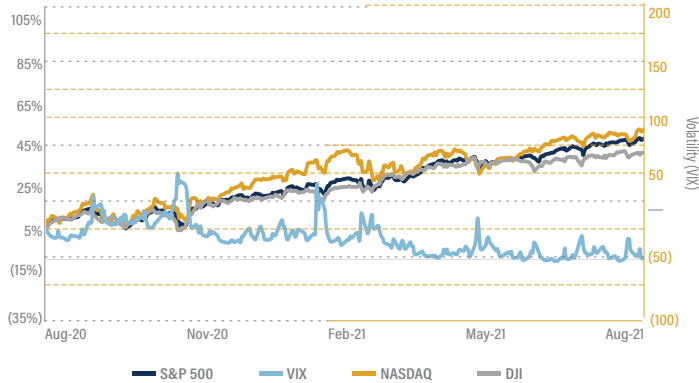
This report reviews the latest trends in the loan environment, covering the relationship between loan volume, leverage multiples and relevant macroeconomic indicators and benchmarks impacting the credit markets. It also includes a statistical update, providing a snapshot of activity across the leveraged finance space.

	AUGUST '21	JULY '21	JUNE '21	MAY '21	AUGUST '20
Indices					
10-Year Treasury	1.30%	1.24%	1.45%	1.58%	0.72%
10-Year vs. 2-Year Spread (basis points)	110	105	120	144	58
3-Month LIBOR	0.12%	0.12%	0.15%	0.13%	0.25%
DJIA	35,361	34,935	34,503	34,529	28,430
S&P 500	4,523	4,395	4,297	4,204	3,500
NASDAQ	15,259	14,673	14,504	13,749	11,775
iShares HY Corporate Bond Fund (ARCA:HYG)	88	88	88	8713	85
iShares Barclays Aggregate (ARCA:AGG)	116	116	115	114.60	118
Commodities					
Crude Oil (\$/BBL)	\$68.50	\$73.95	\$73.47	\$66.32	\$42.61
Natural Gas (\$/MMCF)	\$4.38	\$3.91	\$3.62	\$2.99	\$2.63
Gold (\$/oz.)	\$1,816	\$1,815	\$1,772	\$1,905	\$1,971
Currencies					
GBP in USD	\$1.38	\$1.39	\$1.38	\$1.42	\$1.34
EUR in USD	\$1.18	\$1.19	\$1.19	\$1.22	\$1.20
USD in JYP	¥109.98	¥109.76	¥110.98	¥109.91	¥105.83
USD in CNY	¥6.46	¥6.46	¥6.46	¥6.37	¥6.85
Average New-Issue Loan Pricing - B+/B					
Total Spread (basis points)	484	462	458	451	463
YTM	4.92%	4.68%	4.65%	4.63%	4.18%

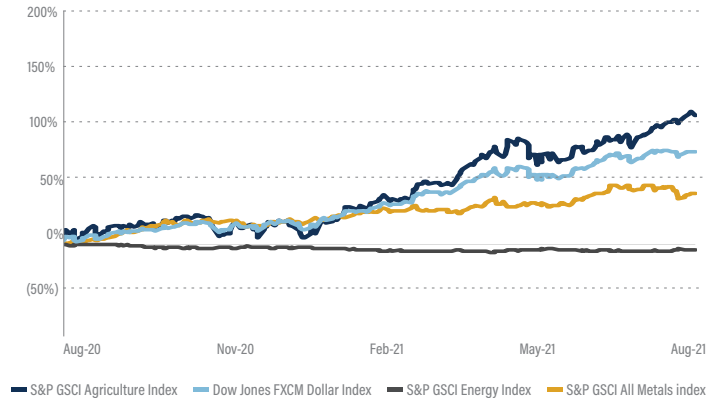
Sources: S&P LCD, Capital IQ, U.S. Census Bureau, St. Louis Fed, U.S. Bureau of Economic Analysis, Freddie Mac

LEVERAGED FINANCE GROWTH & ECONOMIC TRENDS

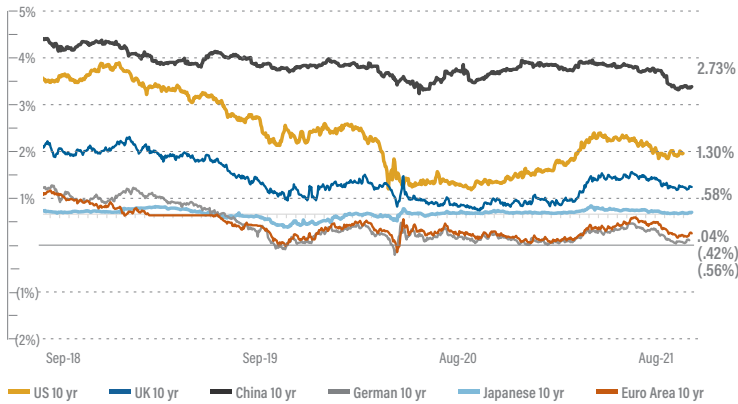
Stock Market Indices



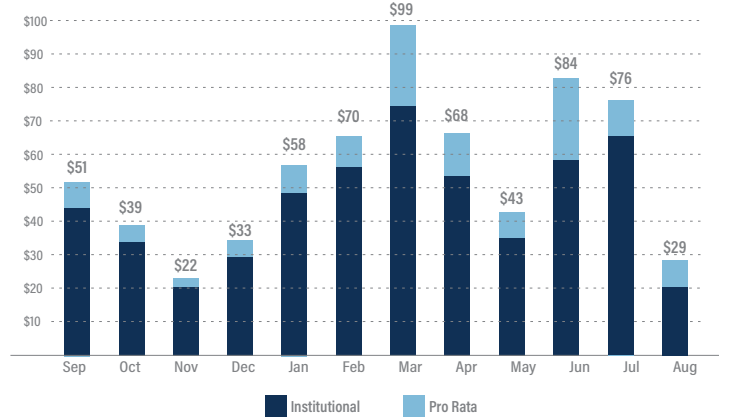
Commodities Prices



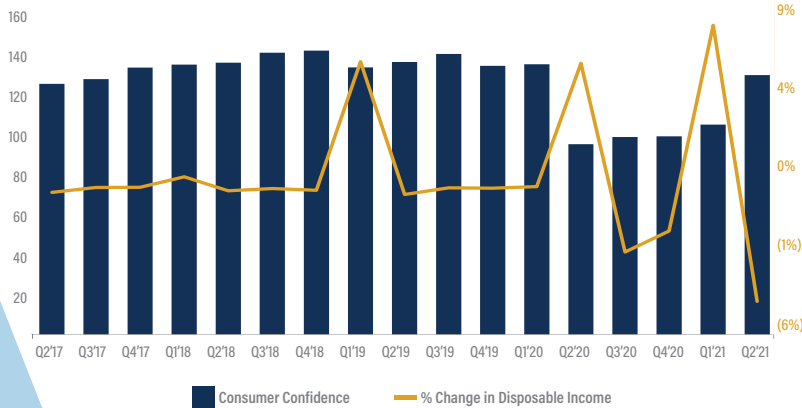
Sovereign Debt Yields



New-Issued Loan Volume by Month (\$ in billions)



Consumer Confidence Index and % Change in DPI

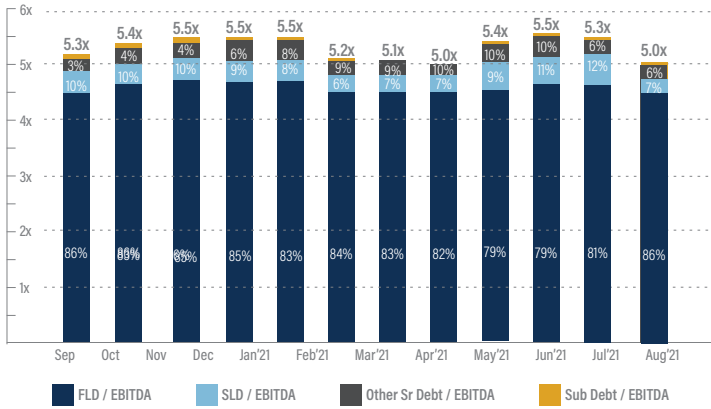


Default Rates of Leveraged Loans

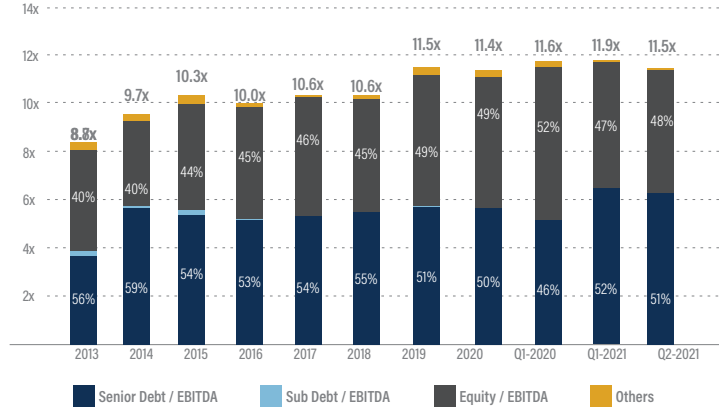


LEVERAGED FINANCE GROWTH & ECONOMIC TRENDS (CONTINUED...)

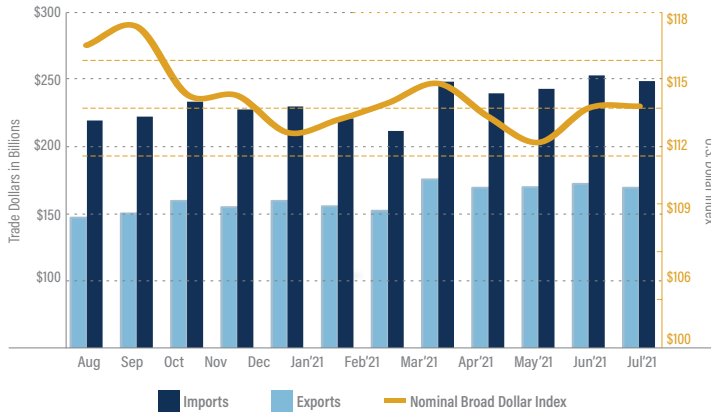
Average Debt Multiples of Highly Leveraged Loans (% of Total)



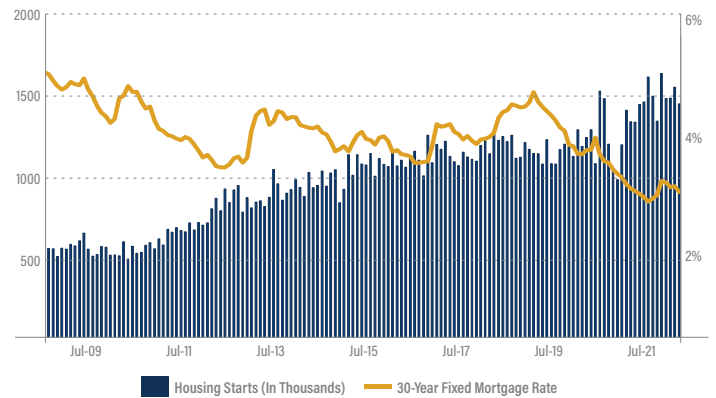
LBO Purchase Price Multiples - All (% of Total Purchase Price)



U.S. Trade Deficit & Dollar Index



Housing Starts & Mortgage Rates



Selected TM Capital Leveraged Finance Experience

HAS COMPLETED A DEBT RECAPITALIZATION WITH SENIOR SECURED CREDIT FACILITIES PROVIDED BY

AND AN ASSET-BASED REVOLVING CREDIT FACILITY PROVIDED BY

HAS COMPLETED A DEBT FINANCING TRANSACTION WITH A SPECIALTY LENDER

FINANCED THE ACQUISITION OF

WITH SENIOR DEBT PROVIDED BY

TM Capital's Leveraged Finance Contacts

Robert Grien
Managing Director
rgrien@tmcapital.com
212.809.1434

Jerome Romano
Managing Director
jromano@tmcapital.com
617.259.2206

David Felts
Managing Director
dfelts@tmcapital.com
404.995.6252

Steve Hunter
Managing Director, Sponsor Coverage
shunter@tmcapital.com
404.995.6232

Jordan Cleare
Vice President
jcleare@tmcapital.com
404.661.7435

Sources: S&P LCD, Capital IQ, U.S. Census Bureau, St. Louis Fed, U.S. Bureau of Economic Analysis, Freddie Mac