

# LEVERAGED FINANCE MONTHLY

MAY 2022

*This report reviews the latest trends in the loan environment, covering the relationship between loan volume, leverage multiples and relevant macroeconomic indicators and benchmarks impacting the credit markets. It also includes a statistical update, providing a snapshot of activity across the leveraged finance space.*

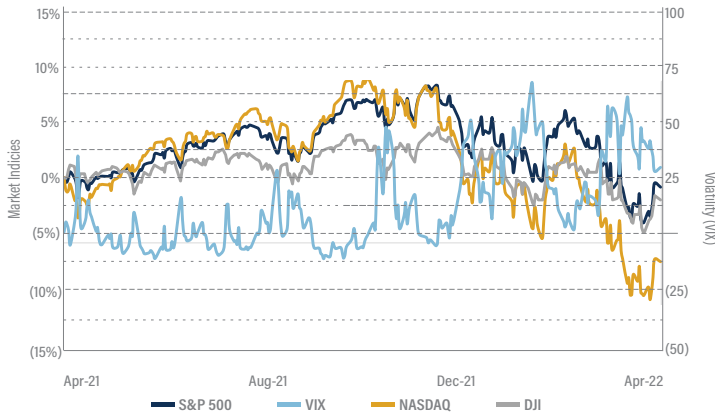
	MAY '22	APRIL '22	MARCH '22	FEBRUARY '22	MAY '21
<b>Indices</b>					
10-Year Treasury	2.85%	2.89%	2.32%	1.83%	1.58%
10-Year vs. 2-Year Spread (basis points)	32	19	4	39	144
3-Month LIBOR	1.61%	1.33%	0.96%	0.50%	0.13%
DJIA	32,990	32,977	34,678	33,893	34,529
S&P 500	4,132	4,132	4,530	4,374	4,204
NASDAQ	12,081	12,335	14,221	13,751	13,749
iShares HY Corporate Bond Fund (ARCA:HYG)	79	79	82	83	87
iShares Barclays Aggregate (ARCA:AGG)	103	103	107	110	115
<b>Commodities</b>					
Crude Oil (\$/BBL)	\$114.67	\$104.69	\$100.28	\$95.72	\$66.32
Natural Gas (\$/MMCF)	\$8.15	\$7.36	\$5.64	\$4.42	\$2.99
Gold (\$/oz.)	\$1,848	\$1,912	\$1,954	\$1,901	\$1,905
<b>Currencies</b>					
GBP in USD	\$1.26	\$1.26	\$1.31	\$1.34	\$1.42
EUR in USD	\$1.07	\$1.05	\$1.11	\$1.12	\$1.22
USD in JYP	¥128.62	¥129.79	¥121.43	¥115.27	¥109.91
USD in CNY	¥6.67	¥6.61	¥6.34	¥6.31	¥6.37
<b>Middle Market New Issue Loan Pricing (1)</b>					
Total Spread (basis points)	-	600	622	574	504
YTM	-	6.79%	6.97%	6.91%	5.95%
<b>Large Corporate New Issue Loan Pricing (2)</b>					
Total Spread (basis points)	574	468	622	452	504
YTM	5.95%	5.47%	6.97%	4.89%	5.95%

<sup>(1)</sup> "Middle Market" defined as syndicated loans in companies with <\$50 million of pro forma adjusted EBITDA

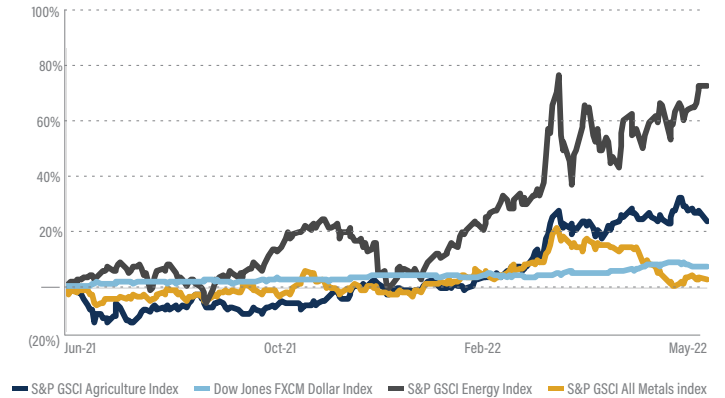
<sup>(2)</sup> "Large Corporate" defined as syndicated loans in companies with >\$50 million of pro forma adjusted EBITDA

# LEVERAGED FINANCE GROWTH & ECONOMIC TRENDS

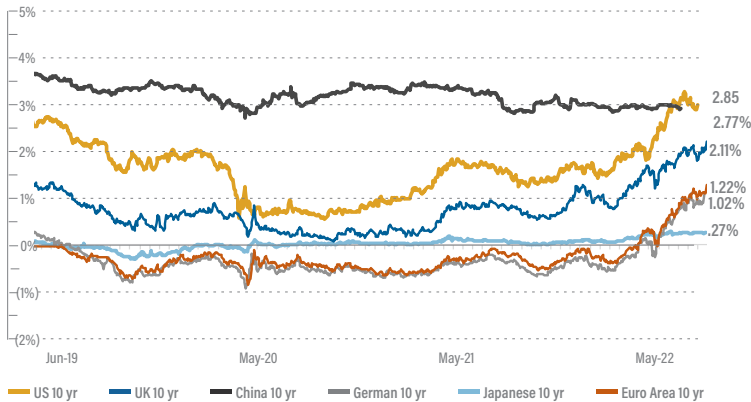
## Stock Market Indices



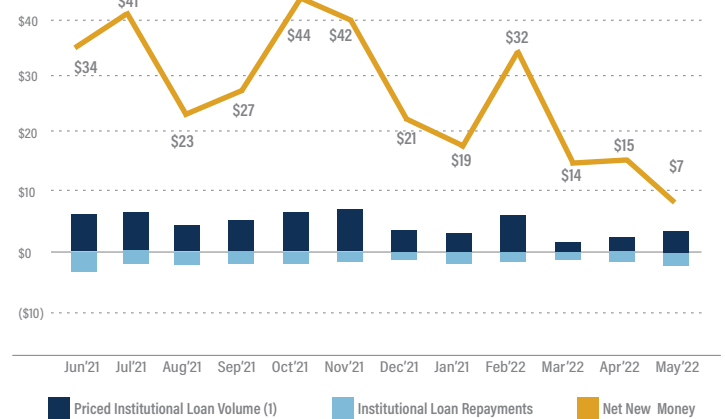
## Commodities Prices



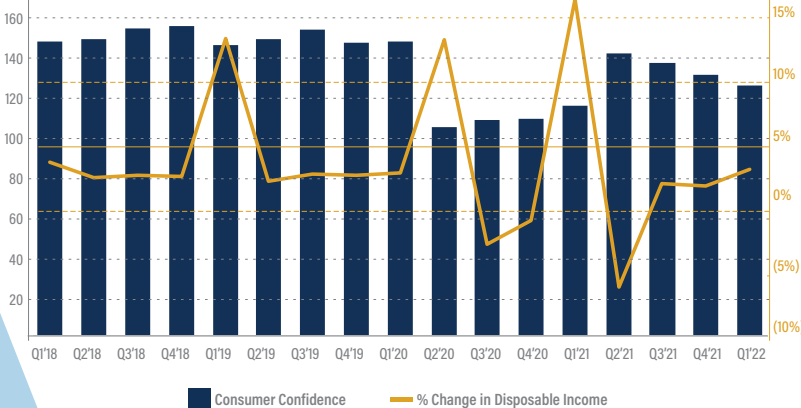
## Sovereign Debt Yields



## Supply of New Money (\$ in billions)



## Consumer Confidence Index and % Change in DPI



## Default Rates of Leveraged Loans



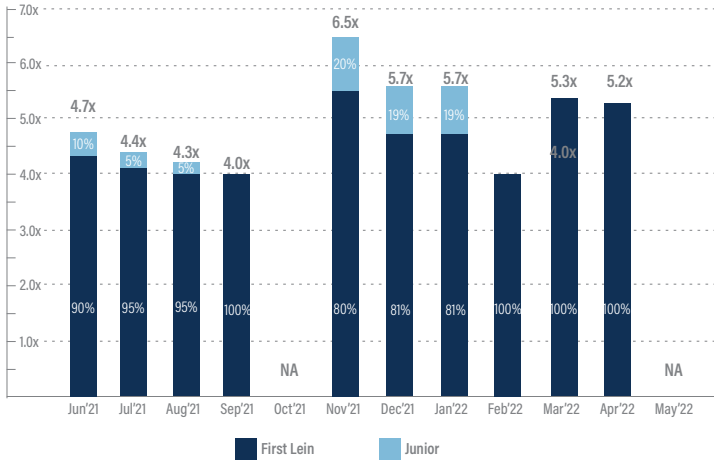
<sup>(1)</sup> "Institutional Issuances" is defined as debt sold primarily to investors (e.g., CLOs, mutual funds and certain non-traditional investors such as hedge funds)

<sup>(2)</sup> Default rates based on issuances of institutional debt only

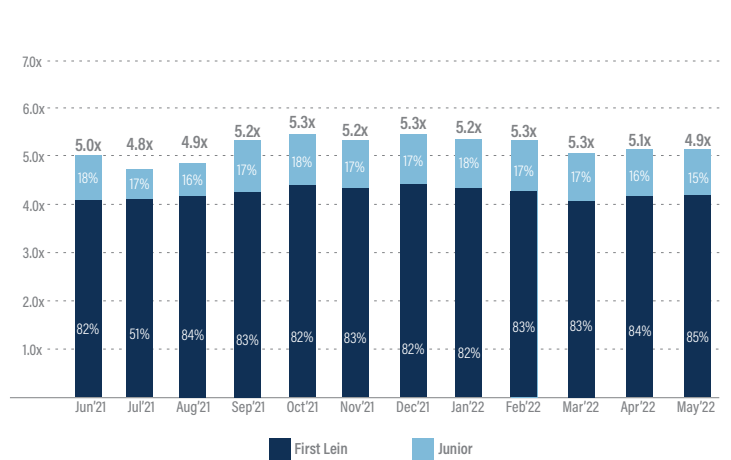
Sources: LevFin Insights, U.S. Census Bureau, St. Louis Fed, U.S. Bureau of Economic Analysis, Freddie Mac

# LEVERAGED FINANCE GROWTH & ECONOMIC TRENDS (CONTINUED...)

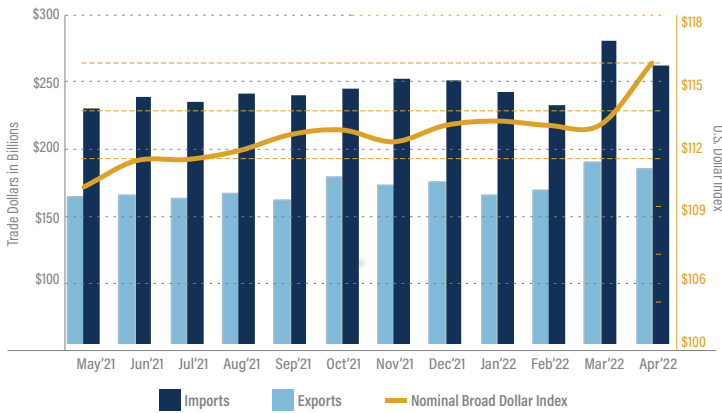
Average Debt Multiples - Middle Market (% of Cap Structure)



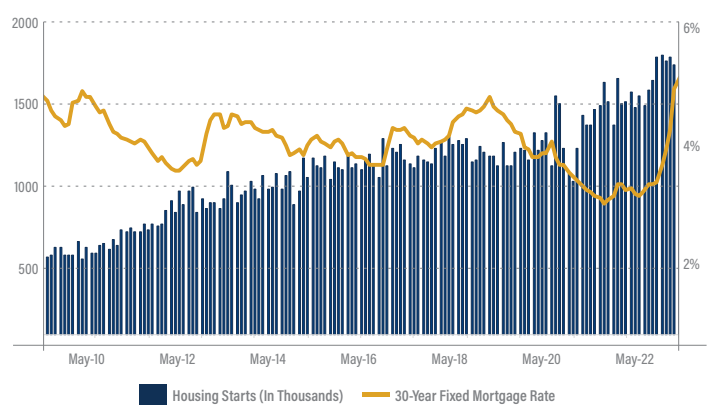
Average Debt Multiples - Large Corporate (% of Cap Structure)



U.S. Trade Deficit & Dollar Index



Housing Starts & Mortgage Rates



## Selected TM Capital Leveraged Finance Experience

HAS COMPLETED A DEBT RECAPITALIZATION WITH SENIOR SECURED CREDIT FACILITIES PROVIDED BY

AND AN ASSET-BASED REVOLVING CREDIT FACILITY PROVIDED BY

HAS COMPLETED A DEBT FINANCING TRANSACTION WITH A SPECIALTY LENDER

FINANCED THE ACQUISITION OF

WITH SENIOR DEBT PROVIDED BY

## TM Capital's Leveraged Finance Contacts

**Robert Grien**  
Managing Director  
rgrien@tmcapital.com  
212.809.1434

**Jerome Romano**  
Managing Director  
jromano@tmcapital.com  
617.259.2206

**David Felts**  
Managing Director  
dfelts@tmcapital.com  
404.995.6252

**Steve Hunter**  
Managing Director, Sponsor Coverage  
shunter@tmcapital.com  
404.995.6232

**Jordan Cleare**  
Vice President  
jcleare@tmcapital.com  
404.661.7435

Sources: LevFin Insights, U.S. Census Bureau, St. Louis Fed, U.S. Bureau of Economic Analysis, Freddie Mac